

# INFRARED THERMOGRAPHY



**TOMTEC NDT MARINE  
SERVICES PTE LTD**

**INFRARED THERMOGRAPHY** is a proactive troubleshooting and predictive maintenance tool. In the hands of a thermographer an infrared camera can be used to make the world that is invisible to the human eye come to life.

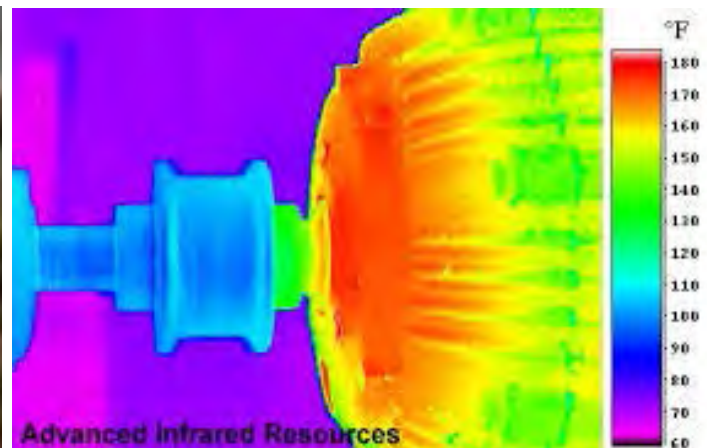
**Infrared Thermography technique** which is non-contact, non-destructive test method uses an infrared imaging to detect, display and record thermal patterns and temperature across the surface of an object. Thermography can be applied to any situation where thermal profile and temperature will provide meaning data about a system or object. It is equipment which senses infrared radiation by converting it into temperature and displays image of temperature distribution.



Without shutting down the equipment, or interfering with production, a thermographic inspection can detect problems in electrical panels, motor control centers, switchgear cabinets, disconnects, transformer bushings and terminations, and equipment control panels that may result in electrical fires, mechanical breakdowns, or significant business interruption.

## **Our Infrared Thermography Services include, but are not limited to:**

- ✓ Digital imaging of your electrical circuits and equipment that are emitting unusual or concerning temperature readings.
- ✓ Recording and reporting on the Infrared Thermography assessment of your system, which identifies any areas of concern discovered during the assessment of your system.
- ✓ Inspection and imaging of your UPS systems input breaker, output breaker, electrical panels and all associated equipment such as Power Distribution Units, step down transformers and wrap around bypasses.



🏠 48 Toh Guan Road East, #08-127, Enterprise Hub,  
Singapore 608586  
☎ Tel: (65) 62624462 Fax: (65) 64681995  
✉ Email: [tomtecmarine@tomtecdnt.com](mailto:tomtecmarine@tomtecdnt.com)  
🌐 Website: <http://www.tomtecdnt.com>

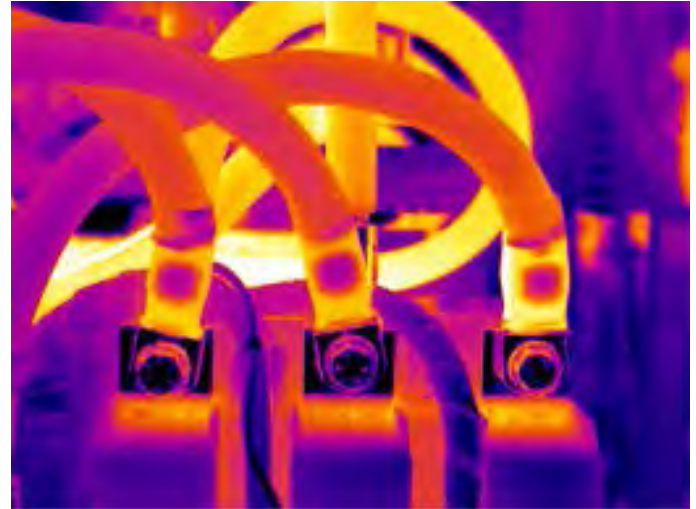
# INFRARED THERMOGRAPHY



**TOMTEC NDT MARINE  
SERVICES PTE LTD**

## Advantages

- ✓ It is a non – contact type technique
- ✓ Fast, reliable & accurate output
- ✓ A large surface area can be scanned in a very short time
- ✓ Presented in visual & digital form
- ✓ Data can be stored for later image processing and analysis
- ✓ Requires very little skill for monitoring (but not for evaluation)
- ✓ No production interruptions, on the other hand all equipment should work at nominal load
- ✓ Complies with legislation or insurance requirements
- ✓ Easily prioritize emergencies
- ✓ Due to the mobility of IR cameras they can be made available at any time and at any place



At TOMTEC, our skilled technicians are experienced in this method, have internationally recognized qualifications and onsite experience. Infrared and digital pictures are recorded and analyzed by our skilled technicians to provide clear and concise thermography reports which show both high temperature problem areas as well as normal temperature non-problem areas for future trending and comparison.

🏠 48 Toh Guan Road East, #08-127, Enterprise Hub,  
Singapore 608586  
☎ Tel: (65) 62624462 Fax: (65) 64681995  
✉ Email: [tomtecmarine@tomtecdnt.com](mailto:tomtecmarine@tomtecdnt.com)  
🌐 Website: <http://www.tomtecdnt.com>